

Ground Floor

Approx. 52.3 sq. metres (563.3 sq. feet)



First Floor

Approx. 35.0 sq. metres (377.2 sq. feet)

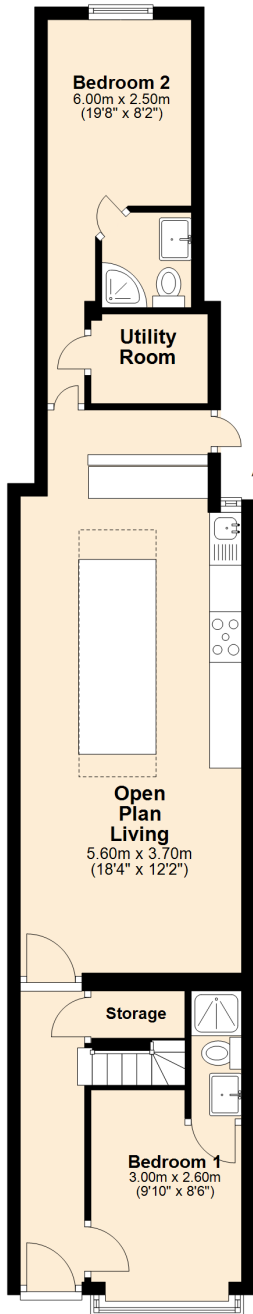


Second Floor

Approx. 37.1 sq. metres (399.4 sq. feet)

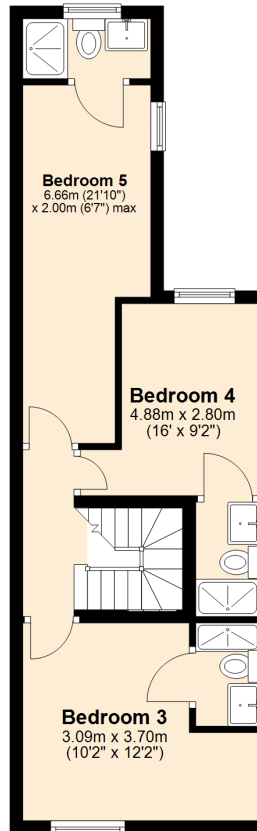


Total area: approx. 124.5 sq. metres (1339.9 sq. feet)

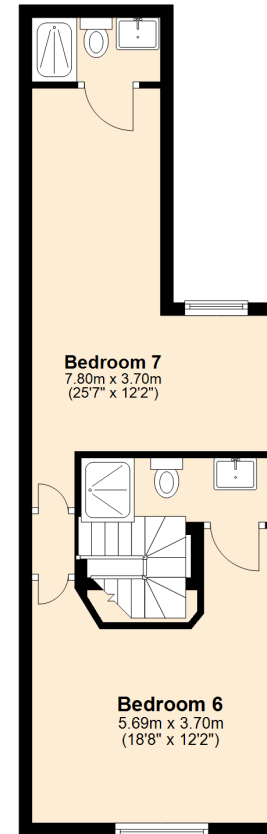


Ground Floor
Approx. 52.3 sq. metres (563.3 sq. feet)

First Floor
Approx. 35.0 sq. metres (377.2 sq. feet)



Second Floor
Approx. 37.1 sq. metres (399.4 sq. feet)



Total area: approx. 124.5 sq. metres (1339.9 sq. feet)
15 Croydon Road