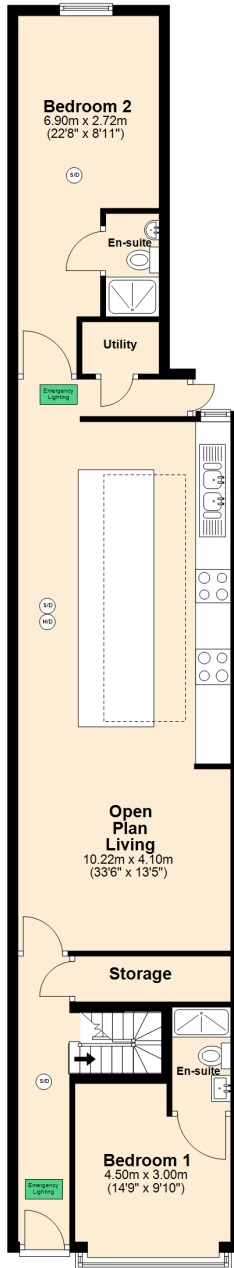
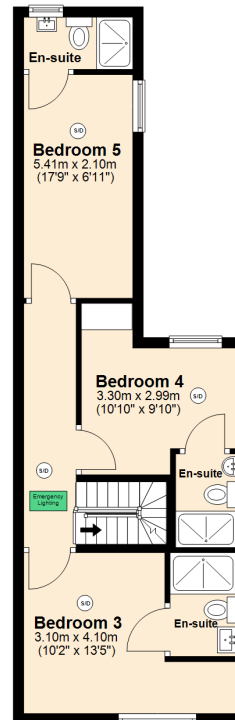


Total area: approx. 162.0 sq. metres (1743.6 sq. feet)

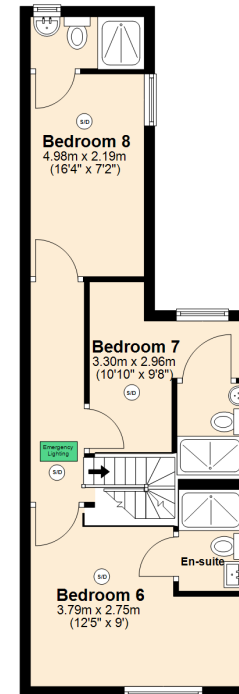
Ground Floor
Approx. 83.6 sq. metres (899.3 sq. feet)



First Floor
Approx. 39.3 sq. metres (423.1 sq. feet)



Second Floor
Approx. 39.1 sq. metres (421.2 sq. feet)



Total area: approx. 162.0 sq. metres (1743.6 sq. feet)
239 Tiverton Road, Selly Oak