

**Ground Floor**  
Approx. 78.4 sq. metres (844.4 sq. feet)



**Basement**  
Approx. 11.5 sq. metres (123.8 sq. feet)



**First Floor**  
Approx. 44.8 sq. metres (482.7 sq. feet)



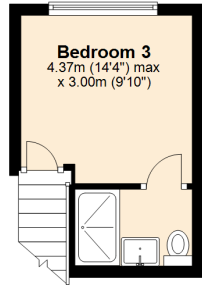
**Second Floor**  
Approx. 45.3 sq. metres (487.5 sq. feet)



Total area: approx. 180.1 sq. metres (1938.4 sq. feet)

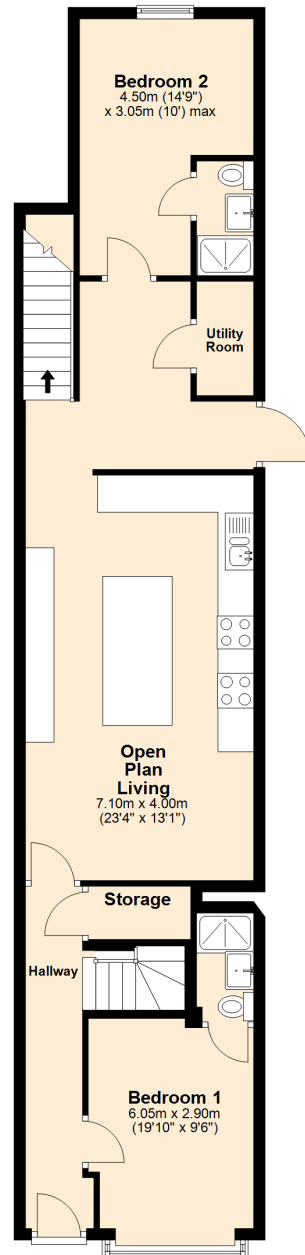
**Basement**

Approx. 11.5 sq. metres (123.8 sq. feet)



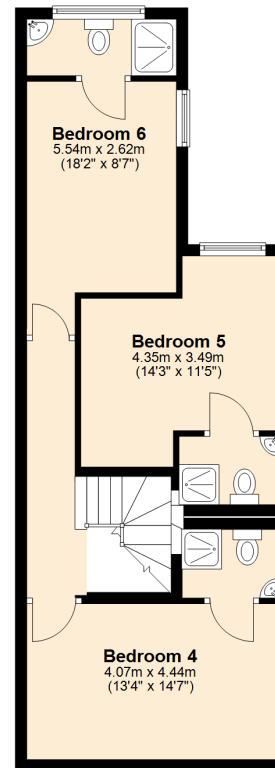
**Ground Floor**

Approx. 78.4 sq. metres (844.4 sq. feet)



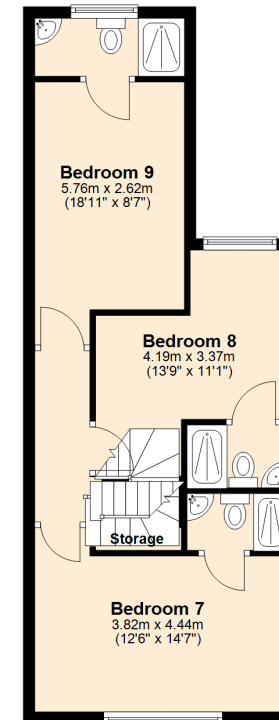
**First Floor**

Approx. 44.8 sq. metres (482.7 sq. feet)



**Second Floor**

Approx. 45.3 sq. metres (487.5 sq. feet)



Total area: approx. 180.1 sq. metres (1938.4 sq. feet)

**24 Rookery Road**