

**Ground Floor**  
Approx. 62.4 sq. metres (671.7 sq. feet)



**First Floor**  
Approx. 32.6 sq. metres (351.0 sq. feet)



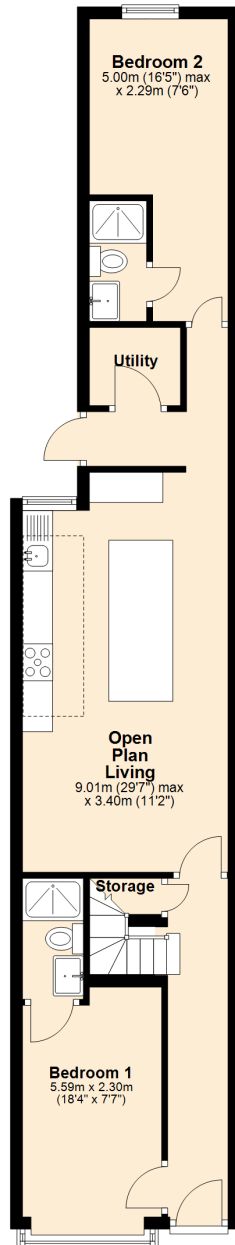
**Second Floor**  
Approx. 33.5 sq. metres (360.1 sq. feet)



Total area: approx. 128.5 sq. metres (1382.8 sq. feet)

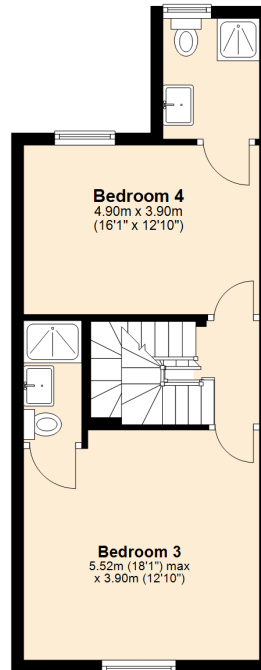
### Ground Floor

Approx. 62.4 sq. metres (671.7 sq. feet)



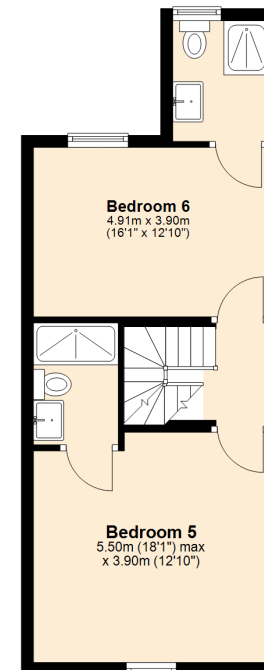
### First Floor

Approx. 32.6 sq. metres (351.0 sq. feet)



### Second Floor

Approx. 33.5 sq. metres (360.1 sq. feet)



Total area: approx. 128.5 sq. metres (1382.8 sq. feet)

**48 Dale Road**