

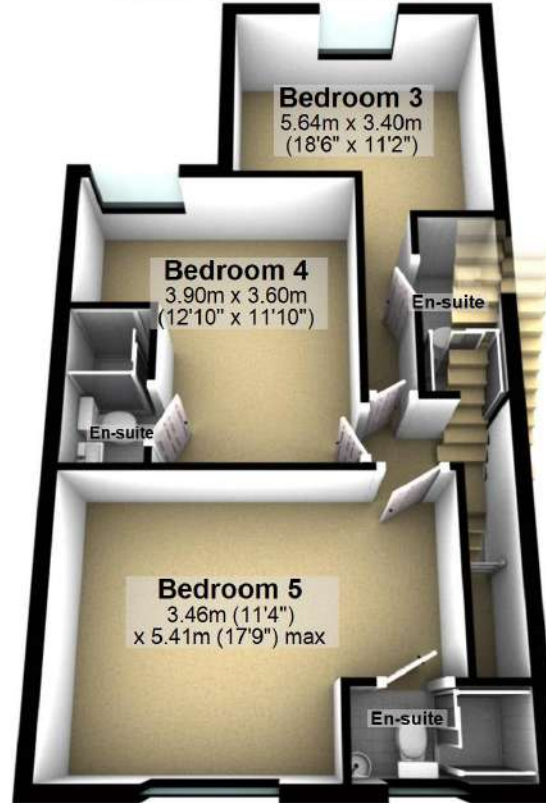
Ground Floor

Approx. 70.4 sq. metres (758.0 sq. feet)



First Floor

Approx. 49.3 sq. metres (530.1 sq. feet)



Second Floor

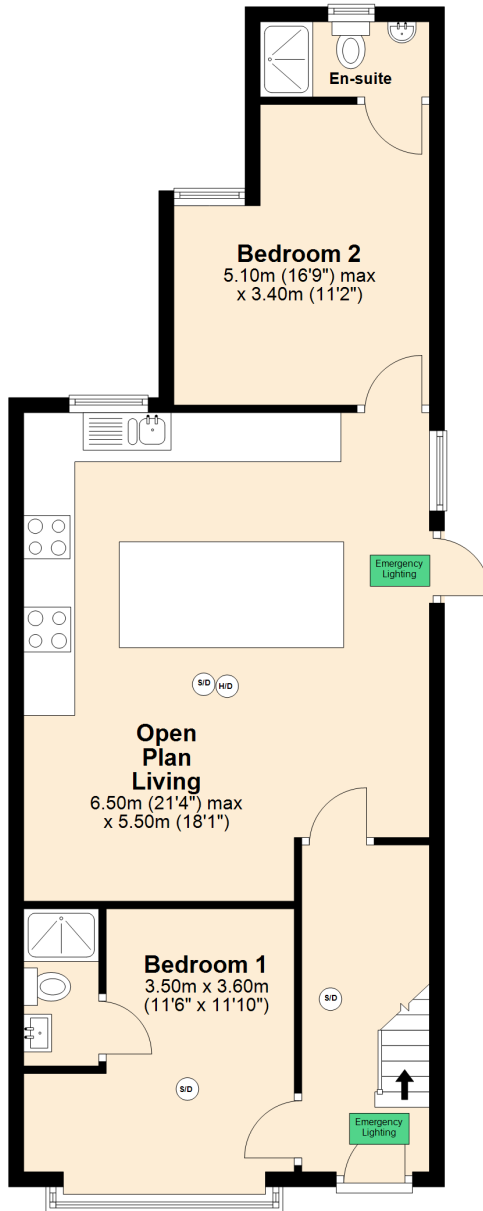
Approx. 37.6 sq. metres (405.0 sq. feet)



Total area: approx. 157.3 sq. metres (1693.1 sq. feet)

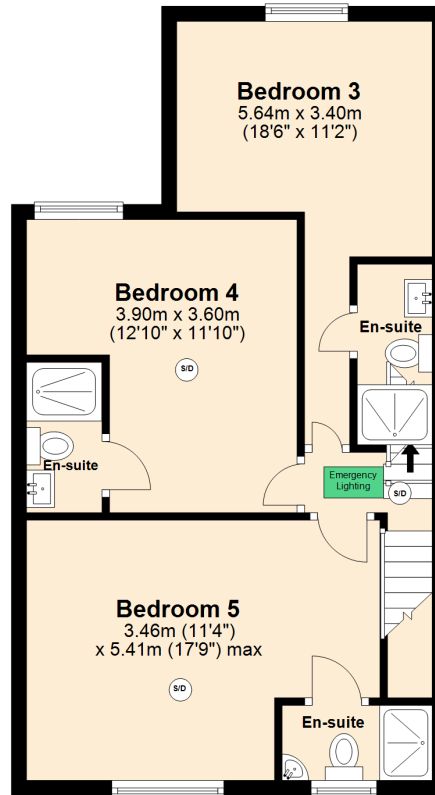
Ground Floor

Approx. 70.4 sq. metres (758.0 sq. feet)



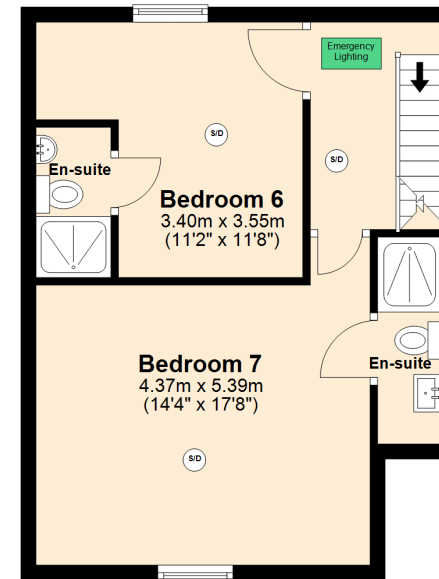
First Floor

Approx. 49.3 sq. metres (530.1 sq. feet)



Second Floor

Approx. 37.6 sq. metres (405.0 sq. feet)



Total area: approx. 157.3 sq. metres (1693.1 sq. feet)

57 Rookery Road, Selly Oak