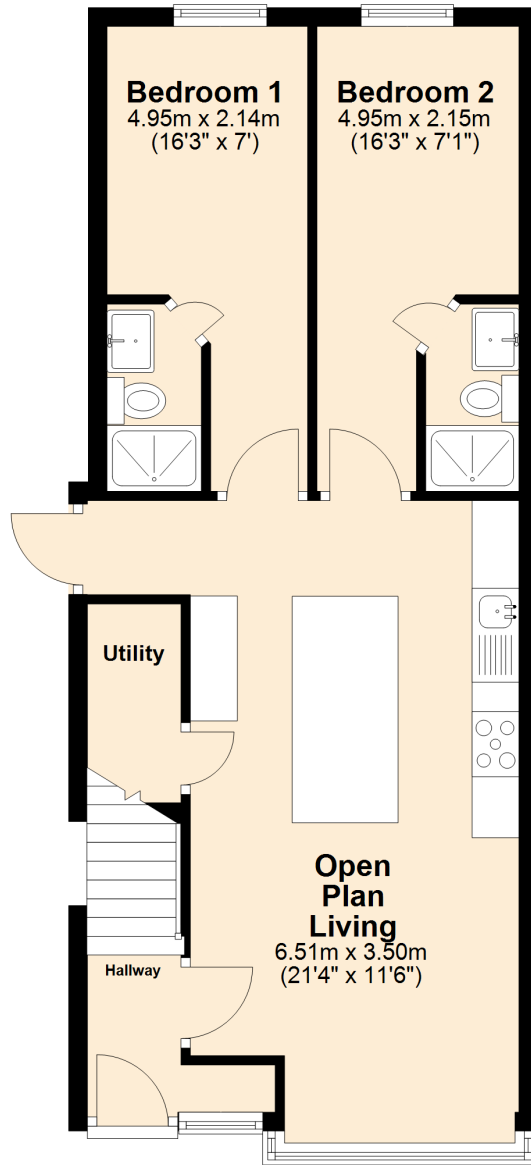


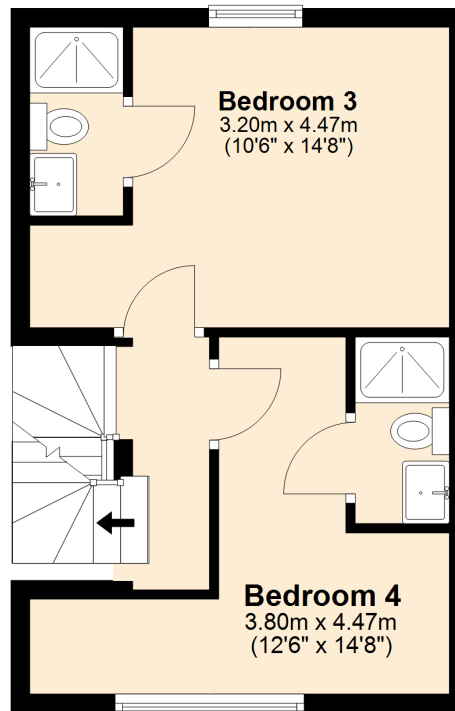
## Ground Floor

Approx. 51.1 sq. metres (549.7 sq. feet)



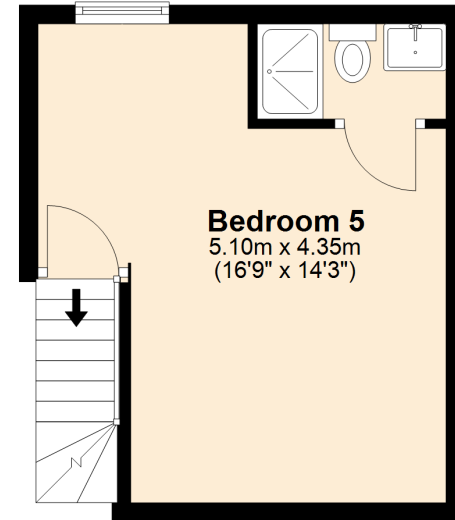
## First Floor

Approx. 28.6 sq. metres (307.4 sq. feet)



## Second Floor

Approx. 19.6 sq. metres (211.4 sq. feet)



Total area: approx. 99.3 sq. metres (1068.6 sq. feet)

**59 Selly Hill Road**