

**Lower Floor**  
Approx. 27.2 sq. metres (292.8 sq. feet)



**Ground Floor**  
Approx. 30.3 sq. metres (325.8 sq. feet)



**Second Floor**  
Approx. 30.9 sq. metres (332.8 sq. feet)



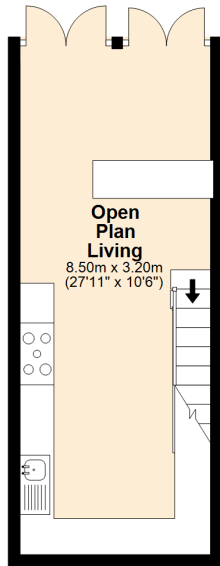
**Third Floor**  
Approx. 16.8 sq. metres (181.0 sq. feet)



Total area: approx. 105.2 sq. metres (1132.3 sq. feet)

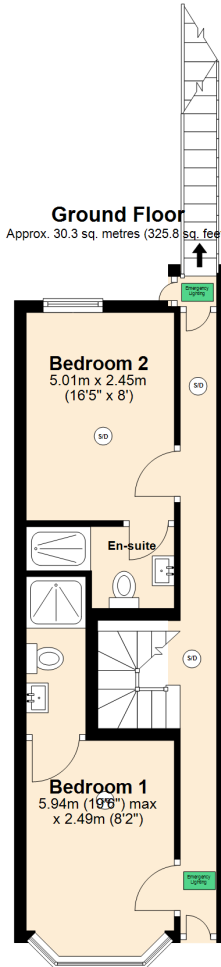
### Lower Floor

Approx. 27.2 sq. metres (292.8 sq. feet)



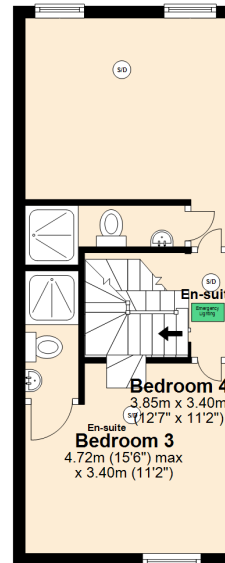
### Ground Floor

Approx. 30.3 sq. metres (325.8 sq. feet)



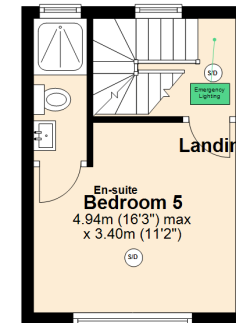
### Second Floor

Approx. 30.9 sq. metres (332.8 sq. feet)



### Third Floor

Approx. 16.8 sq. metres (181.0 sq. feet)



Total area: approx. 105.2 sq. metres (1132.3 sq. feet)  
69 Harrow Road, Birmingham