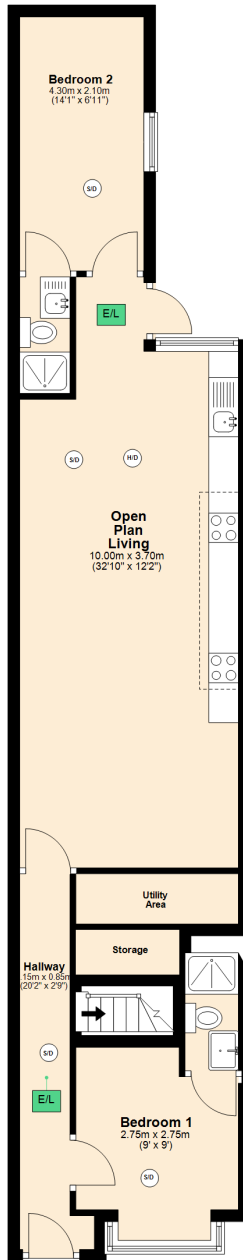


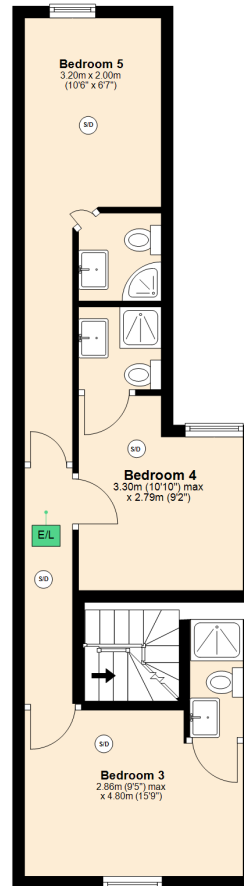
Ground Floor

Approx. 58.0 sq. metres (624.6 sq. feet)



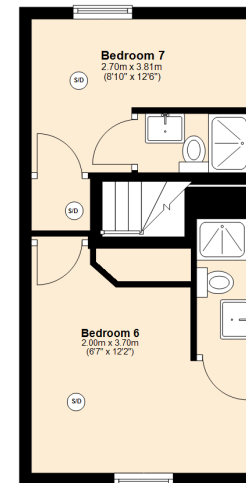
First Floor

Approx. 42.7 sq. metres (459.4 sq. feet)



Second Floor

Approx. 25.5 sq. metres (274.7 sq. feet)



Total area: approx. 126.2 sq. metres (1358.7 sq. feet)
6 Rookery Road, Birmingham, Birmingham