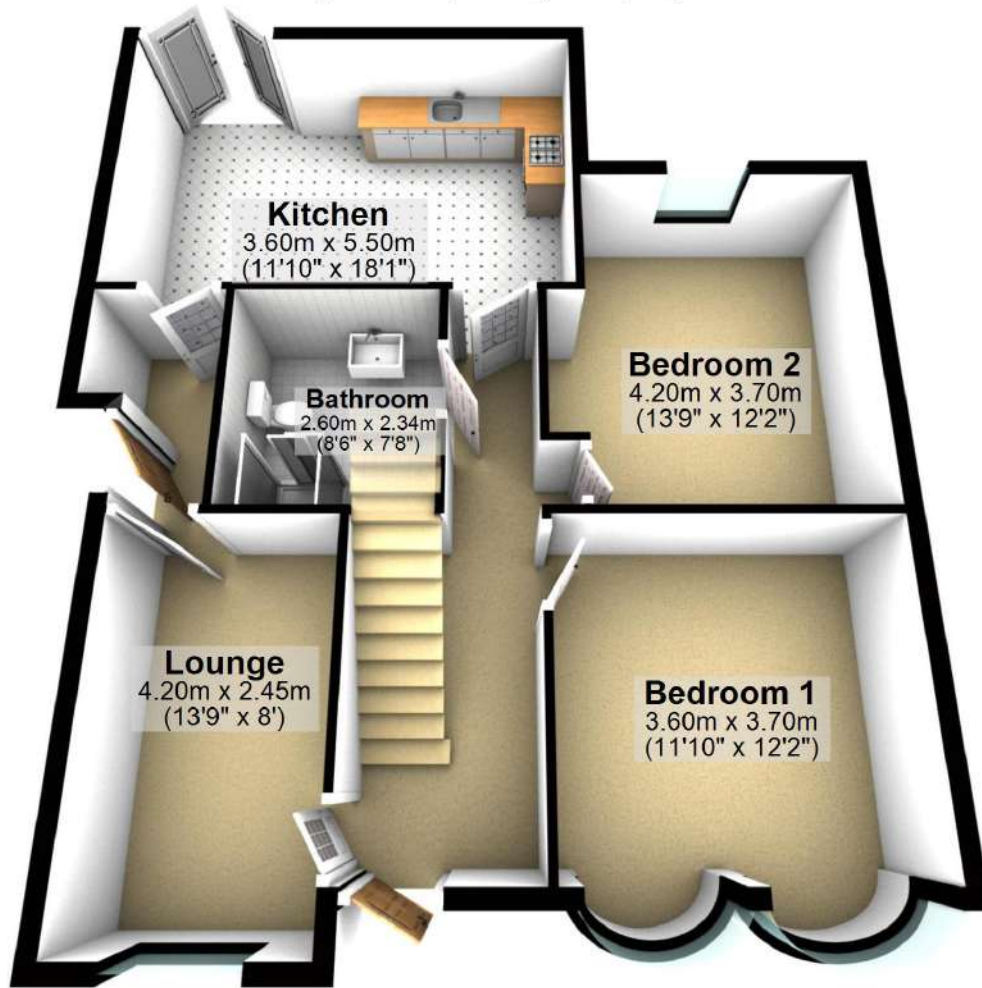


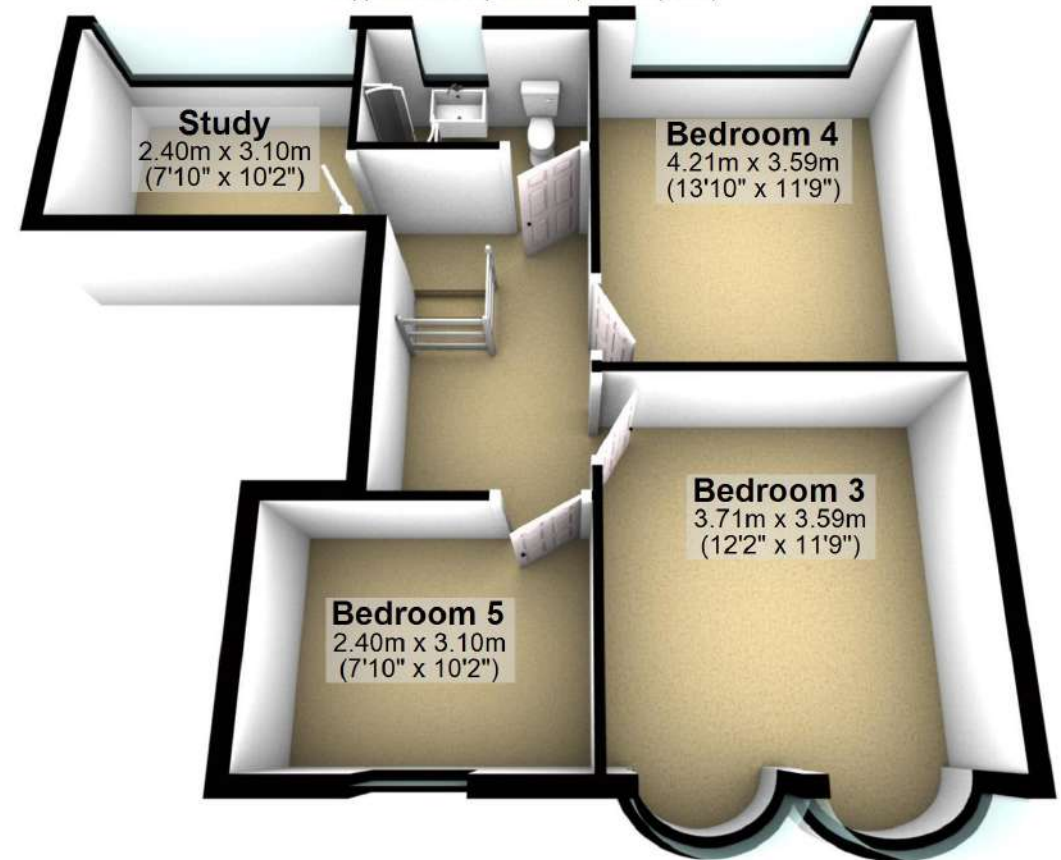
Ground Floor

Approx. 81.3 sq. metres (874.9 sq. feet)



First Floor

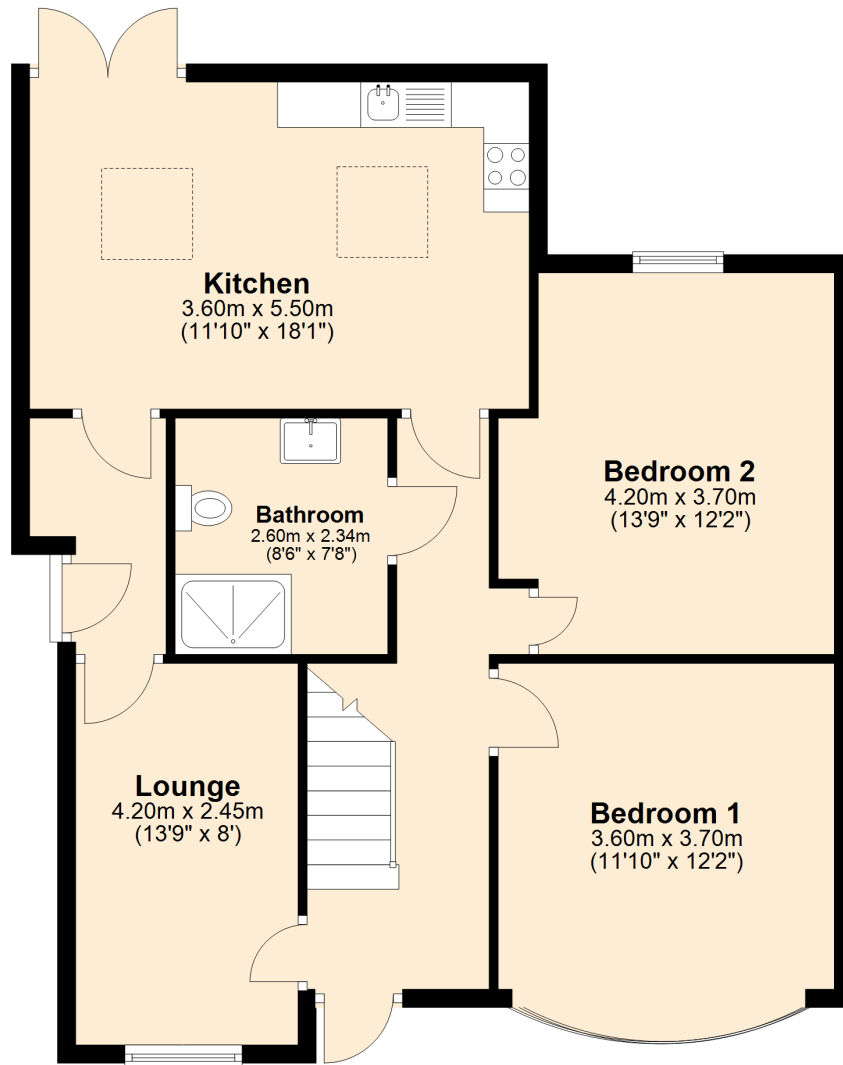
Approx. 58.1 sq. metres (624.8 sq. feet)



Total area: approx. 139.3 sq. metres (1499.7 sq. feet)

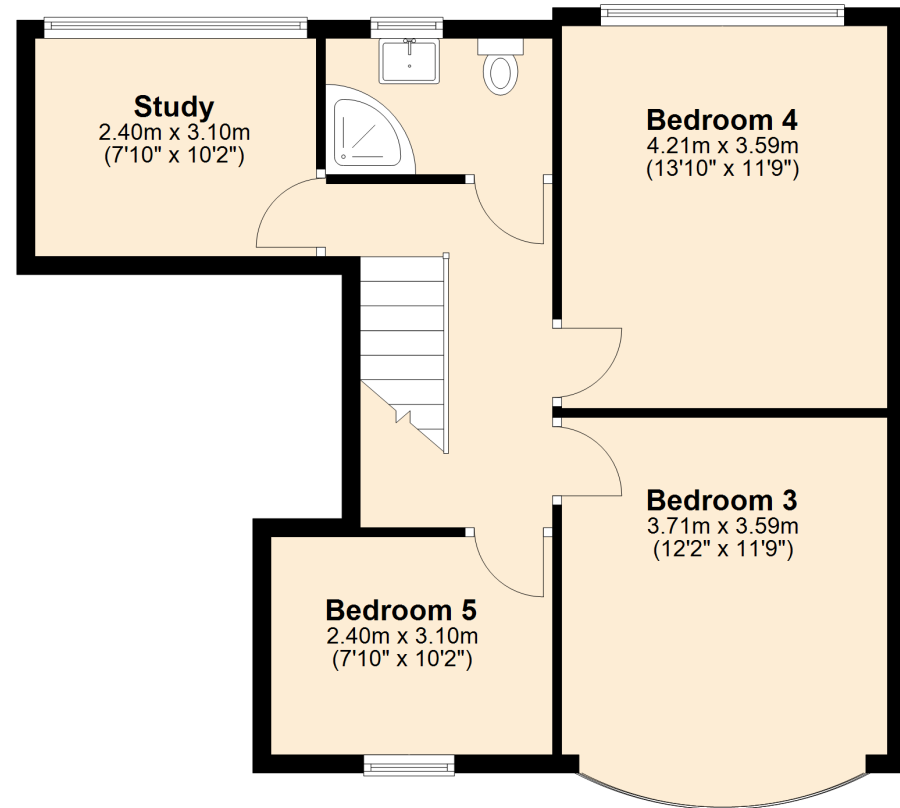
Ground Floor

Approx. 81.3 sq. metres (874.9 sq. feet)



First Floor

Approx. 58.1 sq. metres (624.8 sq. feet)



Total area: approx. 139.3 sq. metres (1499.7 sq. feet)

91 Bournbrook Road