

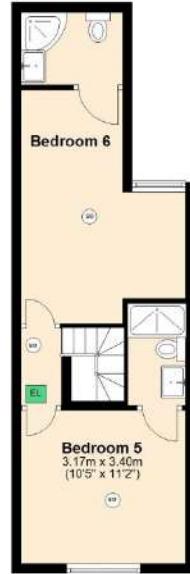
Ground Floor
Approx. 59.4 sq. metres (628.3 sq. feet)



First Floor
Approx. 31.2 sq. metres (335.5 sq. feet)



Second Floor
Approx. 30.5 sq. metres (328.4 sq. feet)



Total area: approx. 120.1 sq. metres (1292.3 sq. feet)
317a Tiverton Road, Selly Oak